

Honda Civic | 1999-2000 Car Radio Removal



STEP 1:

Removing the radio in this vehicle requires removing lower dash panels on both the drivers and passenger sides of the vehicle. The radio is actually secured to the center dash panel as one unit along with the air conditioner vents, air conditioner controls, hazard switch, and defrost buttons. Once the center dash unit is removed, the radio can then be separated from the dash unit.



STEP 2:

Locate and remove (2) phillips screws on the curved lower dash panel below the radio. The 2 screws will be located above the cigarette lighter plug.



STEP 3:

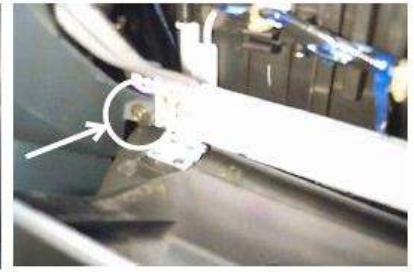
Open the glove box. There are two (2) hidden screws that need to be removed.

The first screw is located at the top left corner of the glove box assembly. Locate and remove one (1) brass colored phillips screw.



STEP 4:

The glove box must be freed from the dash. To keep the glove box from falling to the floor of the vehicle, stop bumpers are attached to each side of the glove box. With you hand, firmly push in the thin plastic of the glove box. You will see the stop bumper attached to the side of the glove box. If you push in hard enough, you can free the stop bumper from behind the dash. Do this to each side, one side at a time, and the glove box will fall free of the dash panel.



STEP 5:

The second hidden screw is located at the lower left corner of the glove box and can only be accessed when the glove box is completely lowered out of the dash. This screw is a phillips screw as well as an 8 mm bolt. Remove this screw/bolt.

Honda Civic | 1999-2000 Car Radio Removal



STEP 6:

You will need to remove the lower left dash panel below the steering column. This panel is secured to the main dash with three (3) phillips screws. Remove all 3 phillips screws.



STEP 7:

Once all 3 phillips screws have been removed, the lower dash panel can be pulled from the main dash. The top of the lower dash panel is secured to the main dash with one snap on the left of the steering column, and one snap on the right of the steering column. Gently pull to unsnap and free the lower dash panel from the main dash.



STEP 8:

Once the lower left dash panel has been removed, you will be able to see a brass colored screw that had been hidden behind the top right of the dash panel just removed (to the right of the steering column). Locate and remove one (1) phillips screw.

Honda Civic | 1999-2000 Car Radio Removal



STEP 9:

All hidden screws securing the lower center dash panel have been removed. With your hands, pull the right side of the lower dash panel (the part of the panel secured by 2 screws hidden behind the glove box) then pull the left side. You will have to wiggle the panel but should be able to pull the panel clear away from the main dash.



STEP 10:

Unplug the connector attached to the rear of the cigarette lighter attached to the lower dash panel.

Once the lower dash panel is removed, you should be able to see metal brackets and wires located below the radio assembly.



STEP 11:

Look up at the bottom of the radio from the drivers side of the vehicle. You will see a silver colored metal bracket located below the radio. You should see four (4) brass colored phillips screw / 8mm bolts screwed into the plate. Remove all 4 phillips screw / 8mm bolts.



STEP 12:

Removing the 4 screw/bolts in the previous step will allow you to remove the radio from the dash. But, the wiring attached to the rear of the radio is secured with clips to the frame of the dash. Because of these clips the radio will resist pulling from the dash. However, there is a work around. You can free the radio by unplugging the Brown and Lite Blue connectors located below the radio (they are located behind the area where the cigarette lighter would normally be). Once these two connectors have been unplugged from their mating connectors inside the dash, the entire radio dash assembly should be able to be pulled from the dash.

Note: The radio is difficult to remove even with all the wiring disconnected. You may have to reach underneath the radio and push the dash assembly from the rear to get it started. Be careful of the metal brackets below the radio, the edges may be sharp.



STEP 13:

When the radio dash assembly is pulled out about 4 inches, you will see a white connector plugged into the rear of the hazard switch. Unplug the white connector (the tab to push in to unplug the connector is located on the bottom of the connector).

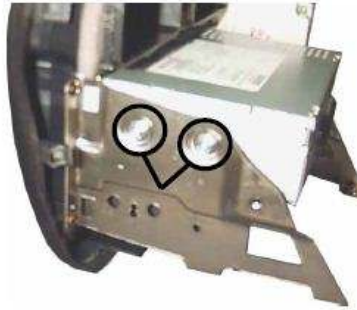
Unplug any other connector attached to the radio dash assembly so you can completely remove the radio dash assembly from the vehicle.

Honda Civic | 1999-2000 Car Radio Removal



STEP 14:

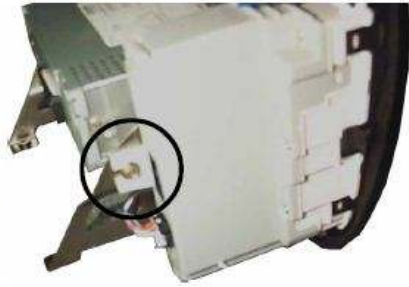
The removed radio dash assembly should look like the photo above. Notice the metal brackets attached to each side of the radio. These brackets must NOT be removed. These brackets actually secure the radio dash assembly to the dash (the 4 screw/bolts you removed below the radio in an earlier step). There are 4 phillips screws / 8mm bolts that secure the radio and pocket below the radio to these metal brackets. The following steps show you how to do this.



STEP 15:

On the open side of the radio dash assembly, remove two (2) **phillips screws / 8mm bolts** that secure the side of the radio to the metal bracket.

The screws/bolts securing the opposite side are hidden behind a gray control box. The following steps show you how to get access to these screws/bolts.



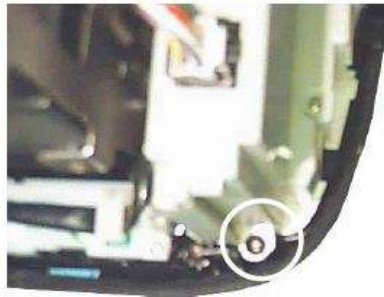
STEP 16:

The rear of the gray control box is secured to the metal bracket with one (1) 8mm bolt. Remove the bolt.



STEP 17:

The top of the gray control box is secured with two (2) **black phillips screws**. Remove both phillips screws. One is hidden in the photo above - it is located between the gray control box and the side of the radio.



STEP 18:

The bottom of the gray control box is secured with one (1) **black phillips screw**. Remove the phillips screw.



STEP 19:

Once all 3 screws securing the gray control box have been removed, pull it to separate it from the radio dash assembly. You do NOT need to unplug the connector attached to the gray control box.

You now have access to the two (2) **phillips screw / 8mm bolts** securing this side of the radio to the metal bracket. Remove both screws/bolts.